

# CUMMINS Rural Directory Map

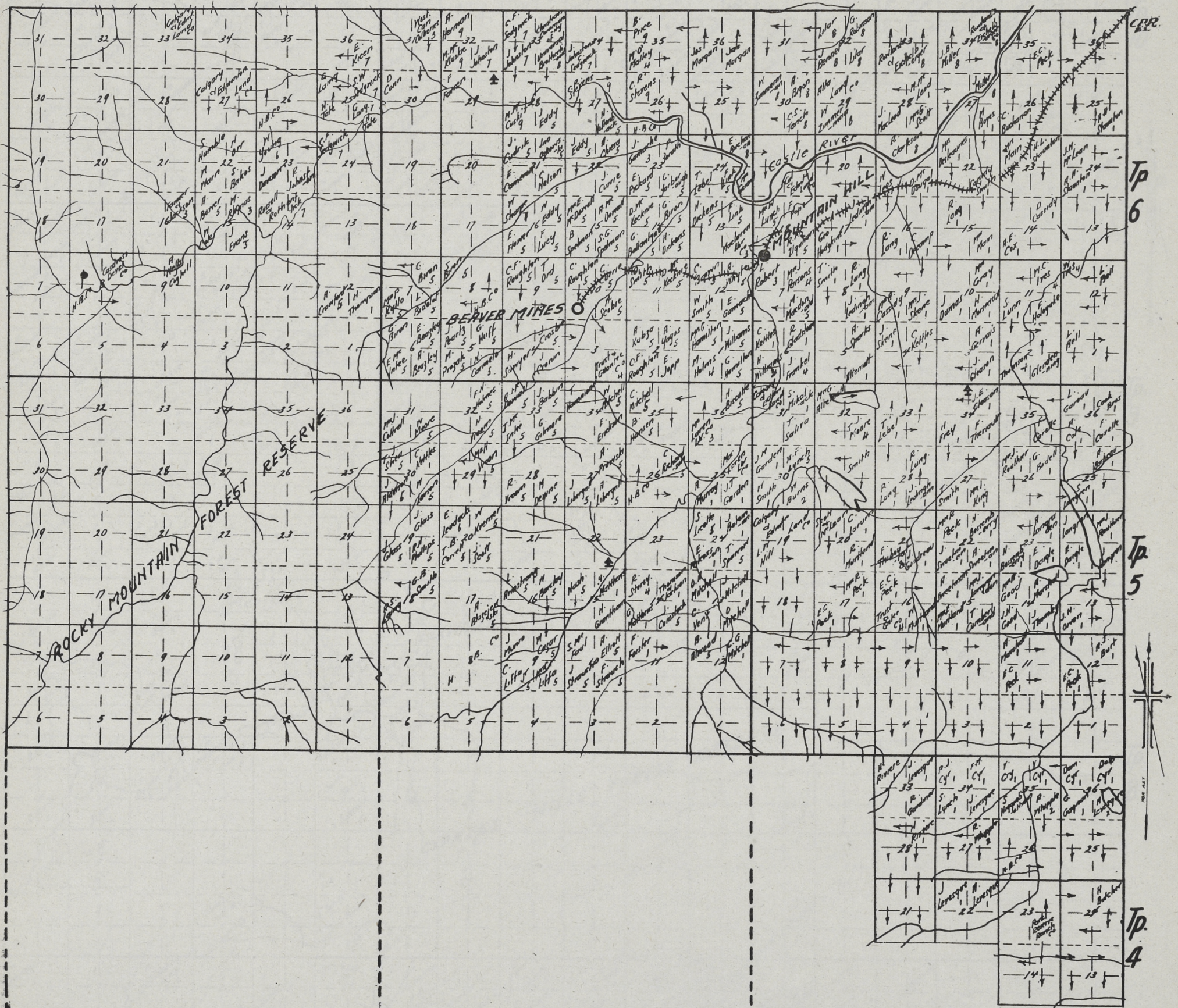
Published by **CUMMINS MAP COMPANY** 404 Chambers of Commerce  
Winnipeg Man.

M. S. ARNIEL, Manager

Price 1.00

We have these Maps for any part of Manitoba, Saskatchewan or Alberta. Also Mailing Lists of all kinds. Write us for Map Making, Mounting, Draughting, Etc.

The small figures under the name indicate the number of the Post Office.



1. PINCHER CREEK  
2. DRY FORK  
3. BLAIRMORE  
4. CALGARY  
5. BEAVER MINES  
6. HILLCREST  
7. LUNDBRECK  
8. COWLEY  
9. BURNIS

R.3

R.2

W. of 5th M.

R.1 Cummins Map Co. No. 19 ALBERTA